

# 2025/26 FIRST® LEGO® League Macao Regional Final

## FLL Explore Registration Rules

### Objectives

Through teamwork, creativity, and technology, students use LEGO® Education SPIKE™ Essential sets to create unique solutions, and present their work via posters and reports to showcase learning outcomes.

### Season Theme

**UNEARTHED**

Students will work together in teams, applying creativity and technology with the LEGO® Education SPIKE™ Essential set to develop unique solutions, and they will showcase their learning outcomes through posters and presentations.



**UNEARTHED**

### Partnership

**Organizer:** Macao Science Center

**Supporter:** Education and Youth Development Bureau

**Implementer:** Macao Gifted Education Association

### Eligibility and participation

Students in Grades 1-4. Each team is composed of 4–6 students and 1–2 adult coaches.

**\*The competition is open to both school-based and community-based teams.**

### Required Kits

2025/26 FLL Explore Set (#45830) and LEGO® Education SPIKE™ Essential kits.

### Competition Date

May 9, 2026 (Saturday)

### Registration

**Deadline:** From now until 23:59, March 30, 2026.

**To register, please visit:** [www.msc.org.mo](http://www.msc.org.mo)

**Registration fee: MOP3,500 per team**, which includes one 2025/26 FLL Explore Set (#45830).  
Registration is only confirmed after payment is completed.

### Briefing Session

**Date:** October 22, 2025, 17:30–18:30

**Content:** Explanation of competition regulations.

# 2025/26 FIRST® LEGO® League Macao Regional Final

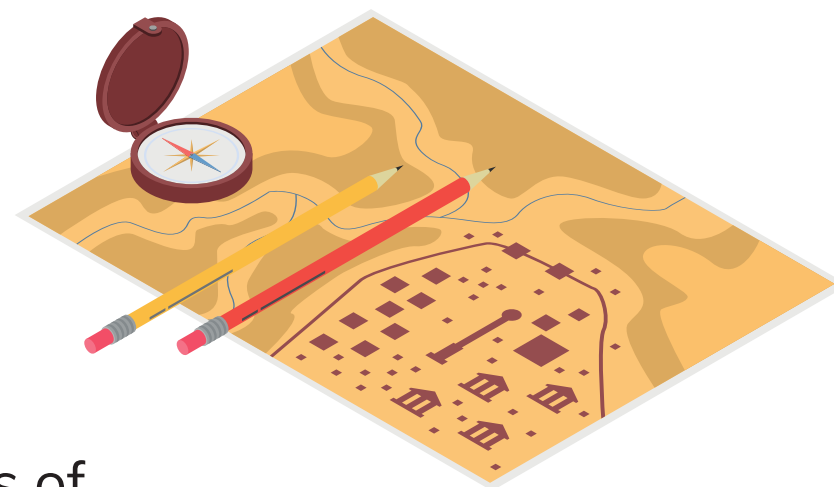
## FLL Explore Registration Rules

### Archaeology Talk

**Date:** March 21, 2026, 10:30-16:00 (Lunch break 12:30-14:00)  
(MSC Convention Center)

**Participant cap:** 50 individuals; With a maximum of 2 coach per enrolled FLLE and FLLD team.

**Content:** Join **Dr. Chan Tak Hou** for a sharing session on the basics of archaeology, recent work in the region, and the challenges in archaeological fieldwork.



### Competition Details

Using the 2025/26 FLL Explore Set (#45830) and the LEGO® Education SPIKE™ Essential Set, teams will build models and program them to create and present their investigation and solutions related to the annual theme **UNEARTHED**.

Teams will also produce a display poster and give a presentation to showcase their learning outcomes. Judges will visit each team for up to 15 minutes, including 10 minutes for the team presentation and 5 minutes for judges' questions.



### Awards

All teams will receive certificates. The competition will also present the following awards, with winning teams receiving trophies or medals.

<b>Champion, 1st Runner-up, 2nd Runner-up</b>		<b>Coding Award</b>	multiple
<b>Challenge Solution Award</b>	multiple	<b>Team Model Award</b>	multiple
<b>Core Values Awards</b>	multiple	<b>Team Poster Award</b>	multiple



### Other Information

1. Winning teams may have opportunities to participate in national or regional competitions within the same season, subject to LEGO® Education announcements.
2. Results and awardees will be announced on the Macao Science Center website: [www.msc.org.mo](http://www.msc.org.mo)
3. The organizer has the right to terminate the event, modify regulations, or disqualify teams for misconduct.
4. Any disputes will be subject to final interpretation by the organizer.

For inquiries, please contact **Macao Science Center Education Department** Ms. Wong (8795 7382, [yanwong@msc.org.mo](mailto:yanwong@msc.org.mo)) and Ms. Si (8795 7395, [nettiesi@msc.org.mo](mailto:nettiesi@msc.org.mo)), or **Macao Gifted Education Association** Mr. Chan (6360 8012, 6228 5688).